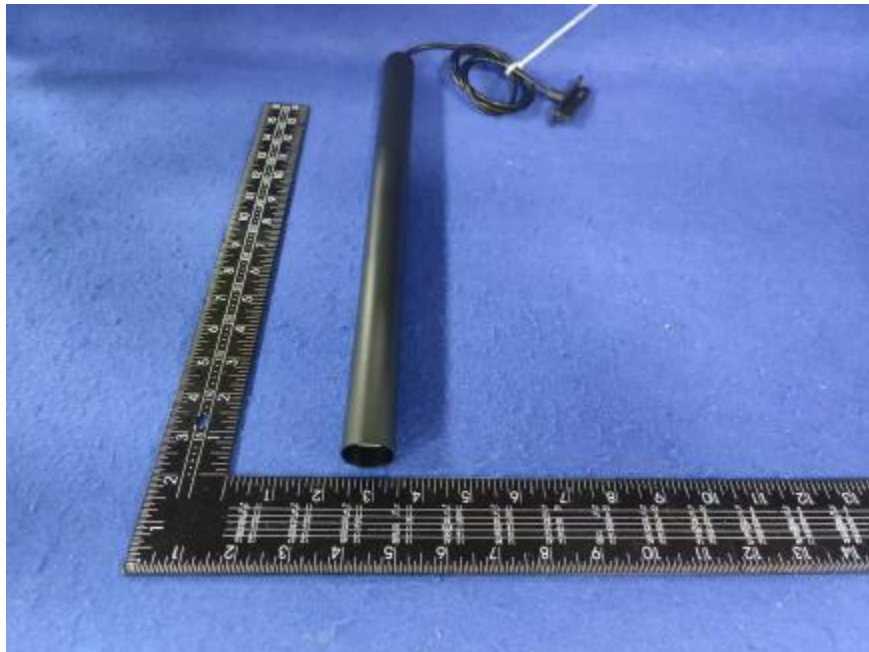


## Luminaire Photograph



Light Output Ratio:	83.6%	
Luminaire Power:	6.451 W	
SHR Nominal:	0.50	Calculated using the TM5
SHR Maximum:	0.55	fine grid method.

C Range: 0 - 360DEG  
C Interval: 30.0DEG  
Test Speed: HIGH  
Temperature: 25.3 °C  
Operators: zoe  
Test Date: 2024-12-18

γ Range: 0 - 180DEG  
γ Interval: 1.0DEG  
Test System: EVERFINE GO-SPEX500\_V1 SYSTEM V2.00.461  
Humidity: 65.0%  
Test Distance: 3.160m [K=1.0000]  
Remarks: LAMP: BXRH-30G60T0-C-83 Ra:90  
LENS: PM-1117B 36R  
NOT DRIVER: DC 48V  
30minutes warm-up

## LUMINOUS INTENSITY DISTRIBUTION DIAGRAM

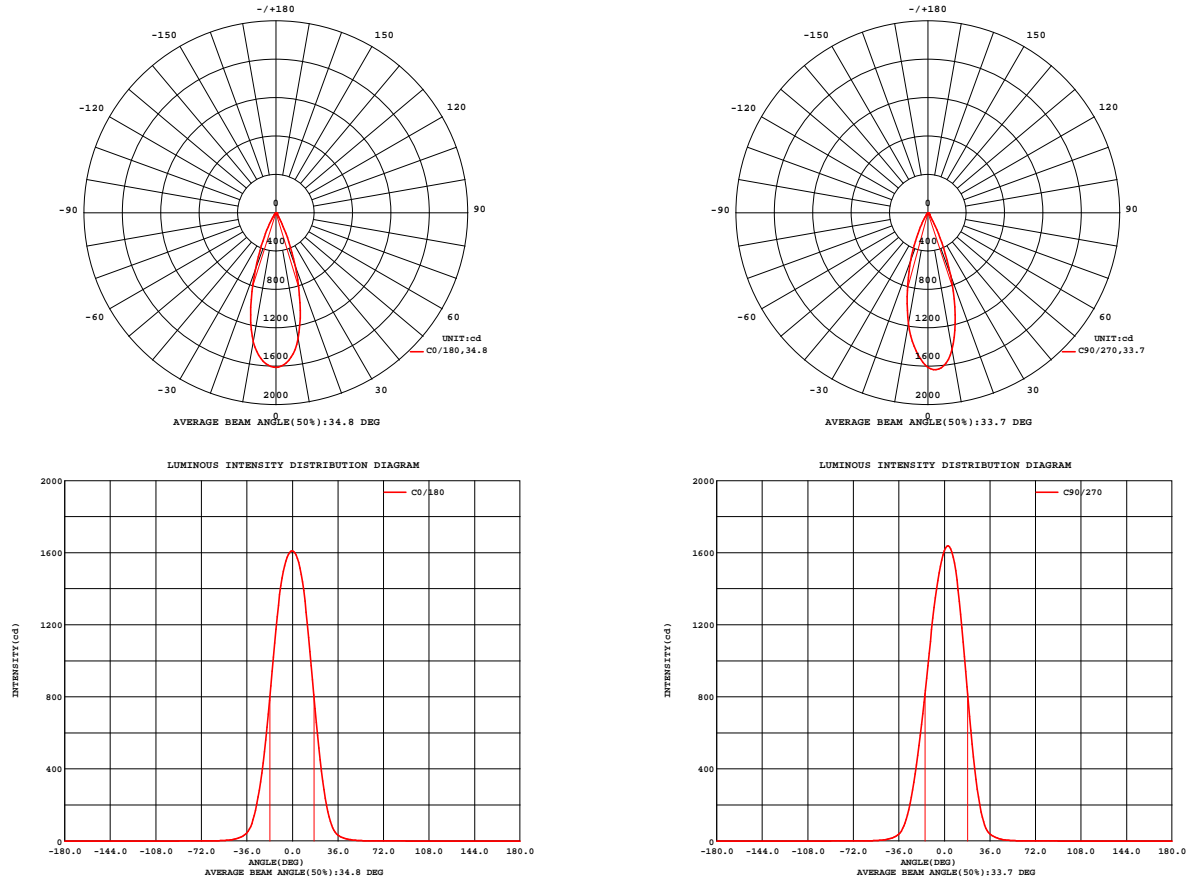


Fig. C0/C180

Fig. C90/C270

C Range: 0 - 360DEG  
C Interval: 30.0DEG  
Test Speed: HIGH  
Temperature: 25.3 °C  
Operators: zoe  
Test Date: 2024-12-18

γ Range: 0 - 180DEG  
γ Interval: 1.0DEG  
Test System: EVERFINE GO-SPEX500\_V1 SYSTEM V2.00.461  
Humidity: 65.0%  
Test Distance: 3.160m [K=1.0000]  
Remarks: LAMP: BXRH-30G60T0-C-83 Ra: 90  
LENS: PM-1117B 36R  
NOT DRIVER: DC 48V  
30minutes warm-up

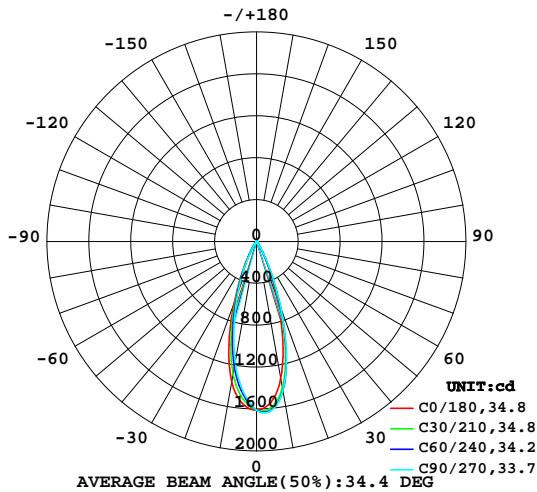
## LUMINAIRE PHOTOMETRIC TEST REPORT

Test:U:47.997V I:0.1344A P:6.4508W PF:1.0000 Freq:49.99Hz  
Lamp Flux:712.09x1 lm

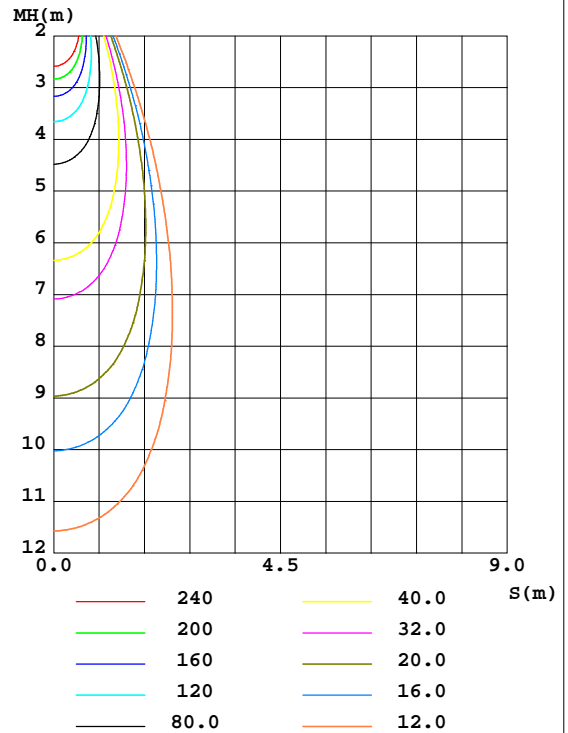
NAME: OZ48-CT-28	TYPE:	WEIGHT:
SPEC.: 3000K	DIM.:	SERIAL No.: 2412181479
MFR.: RISE	SUR.: 0.000346185m2	Shielding Angle:

DATA OF LAMP		PHOTOMETRIC DATA Eff: 92.24 lm/W			
MODEL	Bridgelux	Imax(cd)	1639	S/MH(C0/180)	0.57
NOMINAL POWER(W)	6	LOR(%)	83.6	S/MH(C90/270)	0.51
RATED VOLTAGE(V)	48	TOTAL FLUX(lm)	595.03	$\eta$ UP,DN(C0-180)	0.0,44.0
NOMINAL FLUX(lm)	712.09	CIE CLASS	DIRECT	$\eta$ UP,DN(C180-360)	0.0,39.5
LAMPS INSIDE	1	$\eta$ up(%)	0.0	CIBSE SHR NOM	0.50
TEST VOLTAGE(V)	48	$\eta$ down(%)	83.6	CIBSE SHR MAX	0.55

LUMINOUS INTENSITY DISTRIBUTION DIAGRAM



C0 PLANE ISOLUX DIAGRAM (UNIT:lx)



C Range: 0 - 360DEG  
C Interval: 30.0DEG  
Test Speed: HIGH  
Temperature:25.3℃  
Operators:zoe  
Test Date:2024-12-18

$\gamma$  Range: 0 - 180DEG  
 $\gamma$  Interval: 1.0DEG  
Test System:EVERFINE GO-SPEX500\_V1 SYSTEM V2.00.461  
Humidity:65.0%  
Test Distance:3.160m [K=1.0000]  
Remarks: LAMP:BXRH-30G60T0-C-83 Ra:90  
LENS:PM-1117B 36R  
NOT DRIVER:DC 48V  
30minutes warm-up

## ZONAL FLUX DIAGRAM

### ZONAL FLUX DIAGRAM:

$\gamma$	C0	C45	C90	C135	C180	C225	C270	C315	$\gamma$	$\Phi$ zone	$\Phi$ total	%lum,lamp
10	1332	1433	1449	1404	1366	1256	1174	1217	0- 10	140.4	140.4	23.6,19.7
20	587.1	659.8	692.7	658.7	630.9	569.7	530.1	540.9	10- 20	265.8	406.2	68.3,57
30	109.2	121.1	131.9	131.9	142.0	132.1	120.3	111.2	20- 30	144.5	550.8	92.6,77.3
40	18.26	20.69	22.04	22.34	24.09	22.12	20.24	19.06	30- 40	33.72	584.5	98.2,82.1
50	3.945	4.229	4.371	4.602	4.878	4.768	4.435	4.115	40- 50	8.181	592.7	99.6,83.2
60	0.5734	0.6452	0.7150	0.7466	0.8608	0.8079	0.6915	0.5968	50- 60	2.073	594.8	100,83.5
70	0.0698	0.0612	0.0654	0.0712	0.0818	0.0822	0.0780	0.0691	60- 70	0.2203	595.0	100,83.6
80	0.0193	0.0118	0.0158	0.0136	0.0177	0.0163	0.0223	0.0138	70- 80	0.0378	595.0	100,83.6
90	0	0	0	0	0	0	0	0	80- 90	0.0123	595.0	100,83.6
100	0	0	0	0	0	0	0	0	90-100	0	595.0	100,83.6
110	0	0	0	0	0	0	0	0	100-110	0	595.0	100,83.6
120	0	0	0	0	0	0	0	0	110-120	0	595.0	100,83.6
130	0	0	0	0	0	0	0	0	120-130	0	595.0	100,83.6
140	0	0	0	0	0	0	0	0	130-140	0	595.0	100,83.6
150	0	0	0	0	0	0	0	0	140-150	0	595.0	100,83.6
160	0	0	0	0	0	0	0	0	150-160	0	595.0	100,83.6
170	0	0	0	0	0	0	0	0	160-170	0	595.0	100,83.6
180	0	0	0	0	0	0	0	0	170-180	0	595.0	100,83.6
DEG	LUMINOUS INTENSITY:cd									UNIT:lm		

C Range: 0 - 360DEG  
C Interval: 30.0DEG  
Test Speed: HIGH  
Temperature:25.3℃  
Operators:zoe  
Test Date:2024-12-18

$\gamma$  Range: 0 - 180DEG  
 $\gamma$  Interval: 1.0DEG  
Test System:EVERFINE GO-SPEX500\_V1 SYSTEM V2.00.461  
Humidity:65.0%  
Test Distance:3.160m [K=1.0000]  
Remarks: LAMP:BXRH-30G60T0-C-83 Ra:90  
LENS:PM-1117B 36R  
NOT DRIVER:DC 48V  
30minutes warm-up

### LUMINANCE LIMITATION CURVES

Test:U:47.997V I:0.1344A P:6.4508W PF:1.0000 Freq:49.99Hz  
Lamp Flux:712.09x1 lm

NAME: OZ48-CT-28

TYPE:

WEIGHT:

SPEC.: 3000K

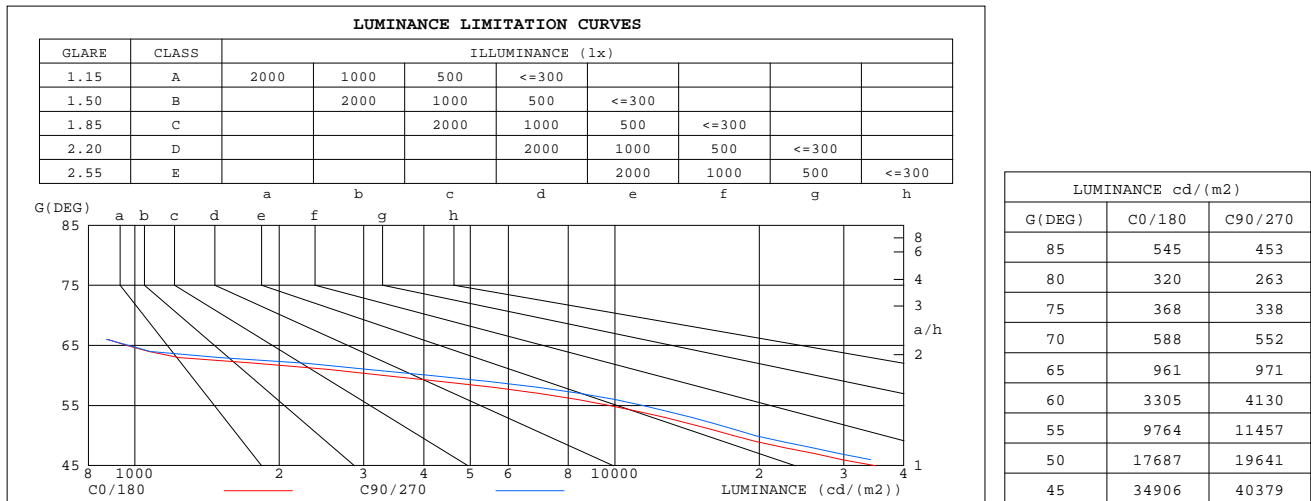
DIM.:

SERIAL No.: 2412181479

MFR.: RISE

SUR.: 0.000346185m2

Shielding Angle:



C Range: 0 - 360DEG  
C Interval: 30.0DEG  
Test Speed: HIGH  
Temperature:25.3℃  
Operators:zoe  
Test Date:2024-12-18

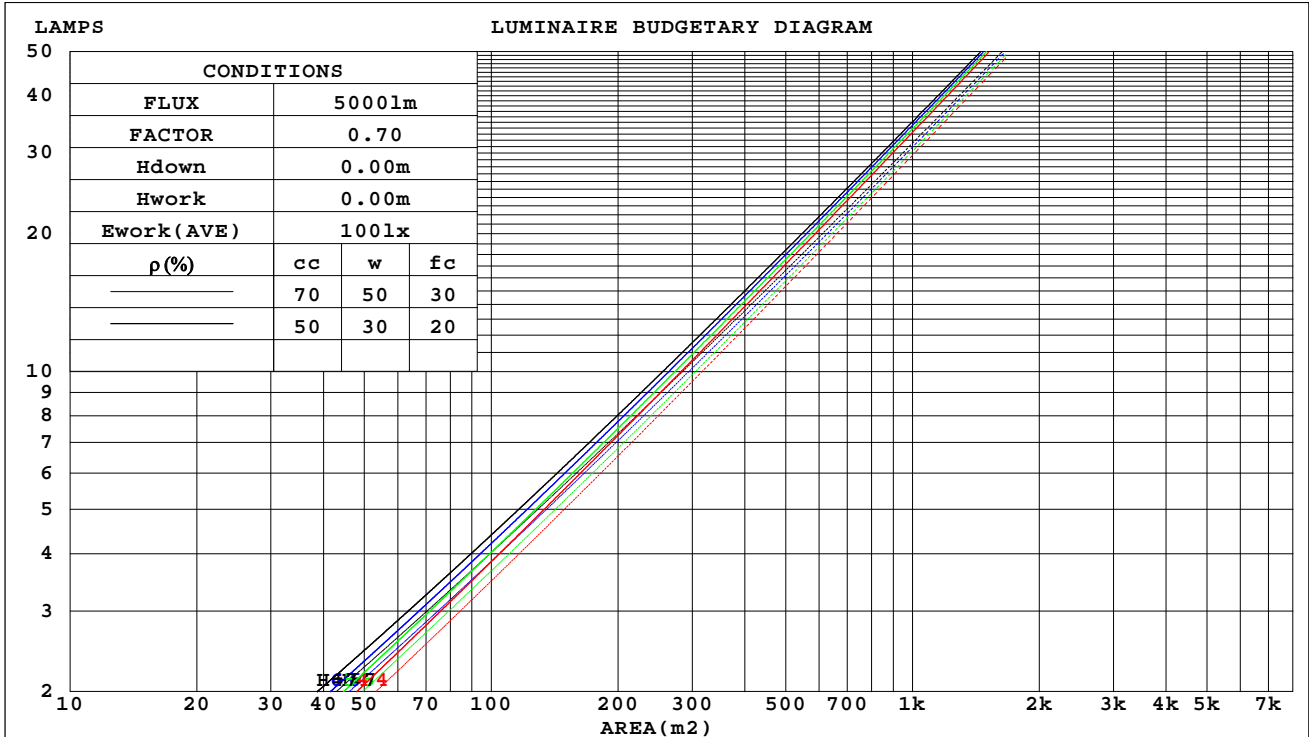
γ Range: 0 - 180DEG  
γ Interval: 1.0DEG  
Test System:EVERFINE GO-SPEX500\_V1 SYSTEM V2.00.461  
Humidity:65.0%  
Test Distance:3.160m [K=1.0000]  
Remarks: LAMP:BXRH-30G60T0-C-83 Ra:90  
LENS:PM-1117B 36R  
NOT DRIVER:DC 48V  
30minutes warm-up

## CU AND LUMINAIRE BUDGETARY ESTIMATE DIAGRAM

Test:U:47.997V I:0.1344A P:6.4508W PF:1.0000 Freq:49.99Hz  
Lamp Flux:712.09x1 lm

NAME: OZ48-CT-28	TYPE:	WEIGHT:
SPEC.: 3000K	DIM.:	SERIAL No.: 2412181479
MFR.: RISE	SUR.: 0.000346185m2	Shielding Angle:

$\rho_{cc}$	80%			70%			50%			30%			10%			0
$\rho_w$	50%	30%	10%	50%	30%	10%	50%	30%	10%	50%	30%	10%	50%	30%	10%	0
$\rho_{fc}$	20%			20%			20%			20%			20%			0
RCR	RCR:Room Cavity Ratio			Coefficients of Utilization(CU)												
0.0	.99	.99	.99	.97	.97	.97	.93	.93	.93	.89	.89	.89	.85	.85	.85	.84
1.0	.94	.92	.91	.92	.91	.89	.89	.88	.86	.86	.85	.84	.83	.82	.81	.80
2.0	.89	.86	.84	.88	.85	.83	.85	.83	.81	.82	.81	.79	.80	.79	.78	.77
3.0	.85	.81	.79	.83	.80	.78	.81	.79	.77	.79	.77	.76	.78	.76	.74	.73
4.0	.81	.77	.74	.80	.76	.74	.78	.75	.73	.76	.74	.72	.75	.73	.71	.70
5.0	.77	.73	.70	.76	.73	.70	.75	.72	.70	.74	.71	.69	.72	.70	.68	.67
6.0	.74	.70	.67	.73	.70	.67	.72	.69	.66	.71	.68	.66	.70	.68	.66	.65
7.0	.71	.67	.64	.70	.67	.64	.69	.66	.64	.69	.66	.63	.68	.65	.63	.62
8.0	.68	.64	.62	.68	.64	.61	.67	.64	.61	.66	.63	.61	.65	.63	.61	.60
9.0	.66	.62	.59	.65	.62	.59	.65	.61	.59	.64	.61	.59	.63	.61	.59	.58
10.0	.63	.60	.57	.63	.59	.57	.62	.59	.57	.62	.59	.57	.61	.58	.56	.56



C Range: 0 - 360DEG  
C Interval: 30.0DEG  
Test Speed: HIGH  
Temperature:25.3℃  
Operators:zoe  
Test Date:2024-12-18

$\gamma$  Range: 0 - 180DEG  
 $\gamma$  Interval: 1.0DEG  
Test System:EVERFINE GO-SPEX500\_V1 SYSTEM V2.00.461  
Humidity:65.0%  
Test Distance:3.160m [K=1.0000]  
Remarks: LAMP:BXRH-30G60T0-C-83 Ra:90  
LENS:PM-1117B 36R  
NOT DRIVER:DC 48V  
30minutes warm-up

### WEC AND CCEC

Test:U:47.997V I:0.1344A P:6.4508W PF:1.0000 Freq:49.99Hz Lamp Flux:712.09x1 lm		
NAME: OZ48-CT-28	TYPE:	WEIGHT:
SPEC.: 3000K	DIM.:	SERIAL No.: 2412181479
MFR.: RISE	SUR.: 0.000346185m2	Shielding Angle:

pcc	80%			70%			50%			30%			10%			0	
pw	50%	30%	10%	50%	30%	10%	50%	30%	10%	50%	30%	10%	50%	30%	10%	0	
pfc	20%			20%			20%			20%			20%			0	
RCR	RCR:Room Cavity Ratio						Wall Exitance Coefficients(WEC)										
0.0																	
1.0	.124	.070	.022	.118	.067	.021	.108	.062	.020	.098	.057	.018	.089	.052	.017		
2.0	.116	.063	.019	.111	.061	.019	.103	.057	.018	.095	.053	.017	.087	.049	.016		
3.0	.109	.058	.017	.105	.056	.017	.098	.053	.016	.091	.050	.015	.085	.047	.015		
4.0	.103	.053	.016	.100	.052	.015	.093	.050	.015	.088	.047	.014	.082	.045	.014		
5.0	.097	.050	.014	.095	.049	.014	.089	.047	.014	.084	.045	.013	.080	.043	.013		
6.0	.093	.046	.013	.090	.046	.013	.086	.044	.013	.081	.042	.012	.077	.041	.012		
7.0	.088	.044	.012	.086	.043	.012	.082	.042	.012	.079	.040	.012	.075	.039	.011		
8.0	.085	.041	.012	.083	.041	.012	.079	.040	.011	.076	.038	.011	.073	.037	.011		
9.0	.081	.039	.011	.079	.039	.011	.076	.038	.011	.073	.037	.011	.071	.036	.010		
10.0	.078	.037	.010	.076	.037	.010	.074	.036	.010	.071	.035	.010	.068	.034	.010		

pcc	80%			70%			50%			30%			10%			0
pw	50%	30%	10%	50%	30%	10%	50%	30%	10%	50%	30%	10%	50%	30%	10%	0
pfc	20%			20%			20%			20%			20%			0
RCR	RCR:Room Cavity Ratio						Ceiling Cavity Exitance Coefficients(CCEC)									
0.0	.159	.159	.159	.136	.136	.136	.093	.093	.093	.053	.053	.053	.017	.017	.017	
1.0	.141	.132	.123	.121	.113	.106	.083	.078	.073	.048	.045	.043	.015	.014	.014	
2.0	.127	.111	.097	.109	.095	.084	.074	.066	.059	.043	.038	.034	.014	.012	.011	
3.0	.115	.095	.079	.099	.082	.068	.068	.057	.048	.039	.033	.028	.013	.011	.009	
4.0	.105	.082	.064	.090	.071	.056	.062	.049	.039	.036	.029	.023	.012	.009	.008	
5.0	.097	.072	.054	.083	.062	.047	.057	.043	.033	.033	.026	.020	.011	.008	.006	
6.0	.090	.064	.045	.077	.055	.039	.053	.039	.028	.031	.023	.017	.010	.007	.005	
7.0	.084	.057	.038	.072	.049	.033	.050	.035	.024	.029	.020	.014	.009	.007	.005	
8.0	.079	.052	.033	.068	.045	.029	.047	.031	.020	.027	.019	.012	.009	.006	.004	
9.0	.074	.047	.029	.064	.041	.025	.044	.029	.018	.026	.017	.011	.008	.006	.004	
10.0	.070	.043	.025	.061	.037	.022	.042	.026	.016	.025	.016	.009	.008	.005	.003	

C Range: 0 - 360DEG  
C Interval: 30.0DEG  
Test Speed: HIGH  
Temperature:25.3℃  
Operators:zoe  
Test Date:2024-12-18

γ Range: 0 - 180DEG  
γ Interval: 1.0DEG  
Test System:EVERFINE GO-SPEX500\_V1 SYSTEM V2.00.461  
Humidity:65.0%  
Test Distance:3.160m [K=1.0000]  
Remarks: LAMP:BXRH-30G60T0-C-83 Ra:90  
LENS:PM-1117B 36R  
NOT DRIVER:DC 48V  
30minutes warm-up

## UGR(Unified Glare Rating) Table

Test:U:47.997V I:0.1344A P:6.4508W PF:1.0000 Freq:49.99Hz Lamp Flux:712.09x1 lm										
NAME: OZ48-CT-28					TYPE:			WEIGHT:		
SPEC.: 3000K					DIM.:			SERIAL No.: 2412181479		
MFR.: RISE					SUR.: 0.000346185m2			Shielding Angle:		
ceiling/cavity	0.7	0.7	0.5	0.5	0.3	0.7	0.7	0.5	0.5	0.3
walls	0.5	0.3	0.5	0.3	0.3	0.5	0.3	0.5	0.3	0.3
working plane	0.2	0.2	0.2	0.2	0.2	0.2	0.2	0.2	0.2	0.2
Room dimensions	Viewed crosswise					Viewed endwise				
x = 2H y = 2H	17.6	18.3	17.8	18.5	18.6	18.4	19.1	18.6	19.3	19.4
3H	17.4	18.1	17.7	18.3	18.5	18.2	18.9	18.5	19.1	19.3
4H	17.4	18.0	17.6	18.2	18.4	18.1	18.8	18.4	19.0	19.2
6H	17.3	17.9	17.6	18.1	18.4	18.1	18.7	18.3	18.9	19.1
8H	17.2	17.8	17.5	18.1	18.3	18.0	18.6	18.3	18.8	19.1
12H	17.2	17.7	17.5	18.0	18.3	18.0	18.5	18.3	18.8	19.1
4H 2H	17.4	18.0	17.6	18.2	18.4	18.1	18.8	18.4	19.0	19.2
3H	17.2	17.8	17.5	18.0	18.3	18.0	18.5	18.3	18.8	19.1
4H	17.1	17.6	17.4	17.9	18.2	17.9	18.4	18.2	18.7	19.0
6H	17.0	17.5	17.4	17.8	18.1	17.8	18.2	18.1	18.6	18.9
8H	16.9	17.4	17.3	17.7	18.1	17.7	18.1	18.1	18.5	18.9
12H	16.9	17.3	17.3	17.7	18.0	17.7	18.1	18.1	18.4	18.8
8H 4H	16.9	17.4	17.3	17.7	18.1	17.7	18.1	18.1	18.5	18.9
6H	16.8	17.2	17.3	17.6	18.0	17.6	18.0	18.0	18.4	18.8
8H	16.8	17.1	17.2	17.5	17.9	17.6	17.9	18.0	18.3	18.7
12H	16.7	17.0	17.2	17.4	17.9	17.5	17.8	18.0	18.2	18.7
12H 4H	16.9	17.3	17.3	17.6	18.0	17.7	18.1	18.1	18.4	18.8
6H	16.8	17.1	17.2	17.5	17.9	17.6	17.9	18.0	18.3	18.7
8H	16.7	17.0	17.2	17.4	17.9	17.5	17.8	18.0	18.2	18.7
Variations with the observer position at spacings(CIE Pub.117):										
S = 1.0H	+ 3.0 / -11.4					+ 3.5 / -10.9				
1.5H	+ 4.9 / - 7.2					+ 5.4 / - 7.3				
2.0H	+ 5.9 / -15.3					+ 6.2 / -15.9				

CIE Pub.117, 712.1 lm Total Lamp Luminous Flux Correct (8log(F/F0) = -1.2)  
Area: 0.000346185 m2

C Range: 0 - 360DEG  
C Interval: 30.0DEG  
Test Speed: HIGH  
Temperature:25.3℃  
Operators:zoe  
Test Date:2024-12-18

γ Range: 0 - 180DEG  
γ Interval: 1.0DEG  
Test System:EVERFINE GO-SPEX500\_V1 SYSTEM V2.00.461  
Humidity:65.0%  
Test Distance:3.160m [K=1.0000]  
Remarks: LAMP:BXRH-30G60T0-C-83 Ra:90  
LENS:PM-1117B 36R  
NOT DRIVER:DC 48V  
30minutes warm-up



### UTILIZATION FACTORS TABLE

Test:U:47.997V I:0.1344A P:6.4508W PF:1.0000 Freq:49.99Hz Lamp Flux:712.09x1 lm		
NAME: OZ48-CT-28	TYPE:	WEIGHT:
SPEC.: 3000K	DIM.:	SERIAL No.: 2412181479
MFR.: RISE	SUR.: 0.000346185m2	Shielding Angle:

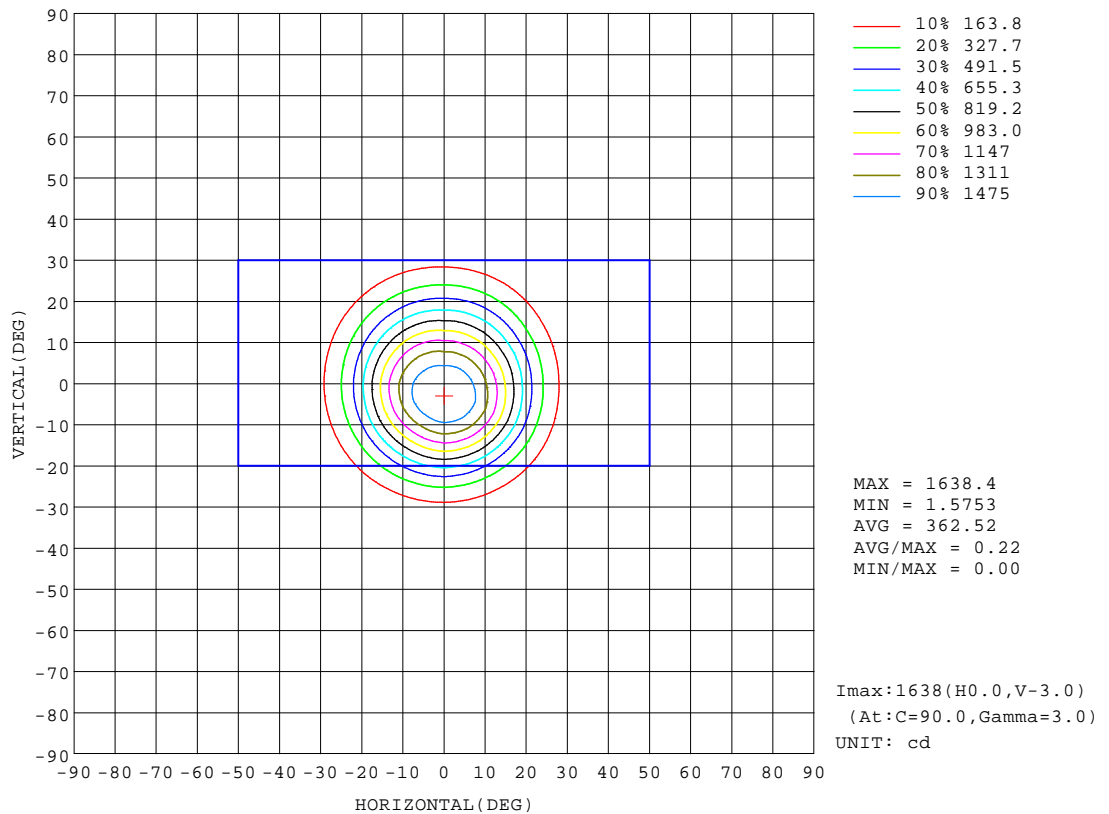
REFLECTANCE										
Ceiling	0.8	0.8	0.8	0.7	0.7	0.7	0.5	0.5	0.5	0
Walls	0.7	0.5	0.3	0.7	0.5	0.3	0.7	0.5	0.3	0
Working plane	0.2	0.2	0.2	0.2	0.2	0.2	0.2	0.2	0.2	0
ROOM INDEX	UTILIZATION FACTORS(PERCENT) $k(RI) \times RCR = 5$									
k = 0.60	76	71	68	75	71	68	75	70	68	65
0.80	81	77	74	81	77	74	80	76	74	71
1.00	85	80	78	84	80	77	83	80	77	74
1.25	88	84	81	87	83	81	85	82	80	77
1.50	90	86	84	89	86	83	87	84	82	79
2.00	92	88	86	90	88	85	88	86	84	80
2.50	93	90	88	92	89	87	89	87	85	81
3.00	94	91	89	93	90	88	90	88	87	81
4.00	96	94	92	94	92	91	91	90	88	83
5.00	97	95	94	95	93	92	92	91	90	83
ROOM INDEX	UF(total)									Direct
According to DIN EN 13032-2 2004			Suspended					SHRNOM = 1.25		

C Range: 0 - 360DEG  
C Interval: 30.0DEG  
Test Speed: HIGH  
Temperature:25.3℃  
Operators:zoe  
Test Date:2024-12-18

γ Range: 0 - 180DEG  
γ Interval: 1.0DEG  
Test System:EVERFINE GO-SPEX500\_V1 SYSTEM V2.00.461  
Humidity:65.0%  
Test Distance:3.160m [K=1.0000]  
Remarks: LAMP:BXRH-30G60T0-C-83 Ra:90  
LENS:PM-1117B 36R  
NOT DRIVER:DC 48V  
30minutes warm-up

## ISOCANDELA DIAGRAM

Test:U:47.997V I:0.1344A P:6.4508W PF:1.0000 Freq:49.99Hz Lamp Flux:712.09x1 lm		
NAME: OZ48-CT-28	TYPE:	WEIGHT:
SPEC.: 3000K	DIM.:	SERIAL No.: 2412181479
MFR.: RISE	SUR.: 0.000346185m2	Shielding Angle:

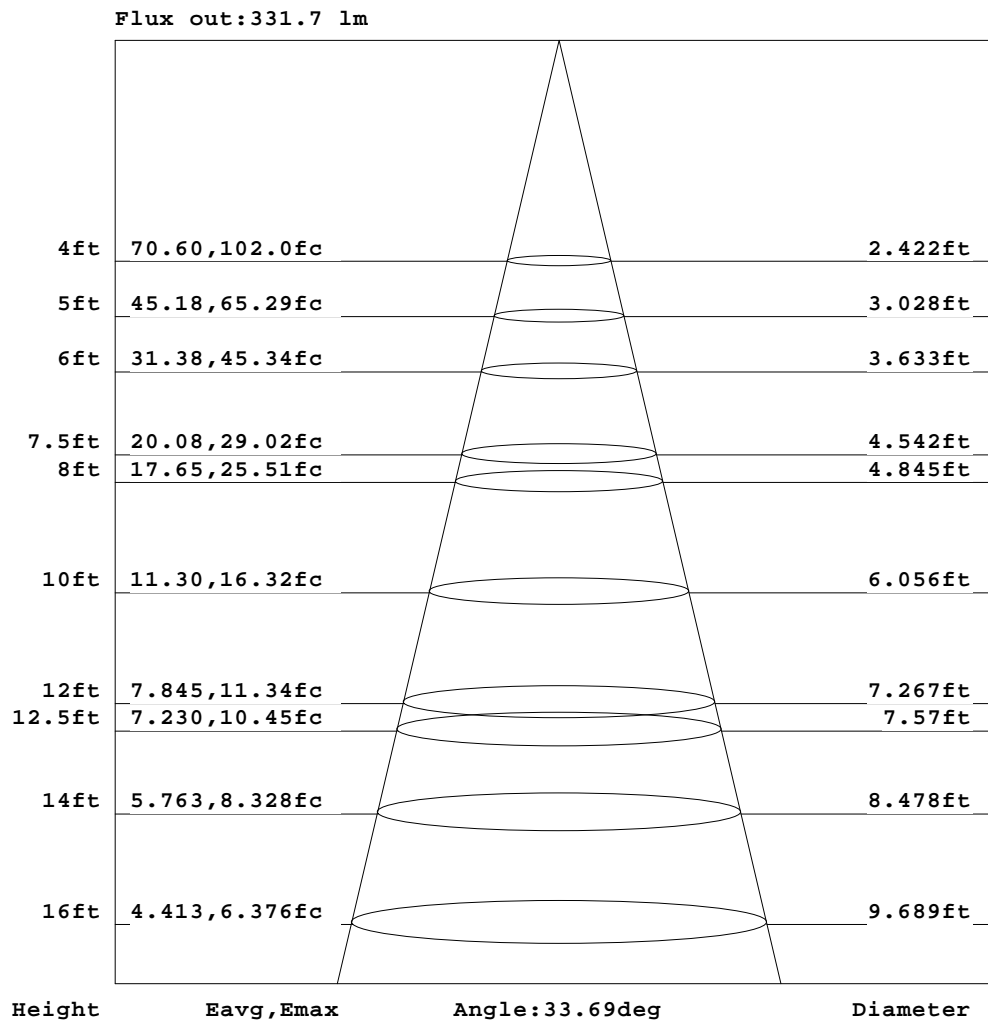


C Range: 0 - 360DEG  
C Interval: 30.0DEG  
Test Speed: HIGH  
Temperature:25.3℃  
Operators:zoe  
Test Date:2024-12-18

γ Range: 0 - 180DEG  
γ Interval: 1.0DEG  
Test System:EVERFINE GO-SPEX500\_V1 SYSTEM V2.00.461  
Humidity:65.0%  
Test Distance:3.160m [K=1.0000]  
Remarks: LAMP:BXRH-30G60T0-C-83 Ra:90  
LENS:PM-1117B 36R  
NOT DRIVER:DC 48V  
30minutes warm-up

## AAI Figure

Test:U:47.997V I:0.1344A P:6.4508W PF:1.0000 Freq:49.99Hz Lamp Flux:712.09x1 lm		
NAME: OZ48-CT-28	TYPE:	WEIGHT:
SPEC.: 3000K	DIM.:	SERIAL No.: 2412181479
MFR.: RISE	SUR.: 0.000346185m2	Shielding Angle:



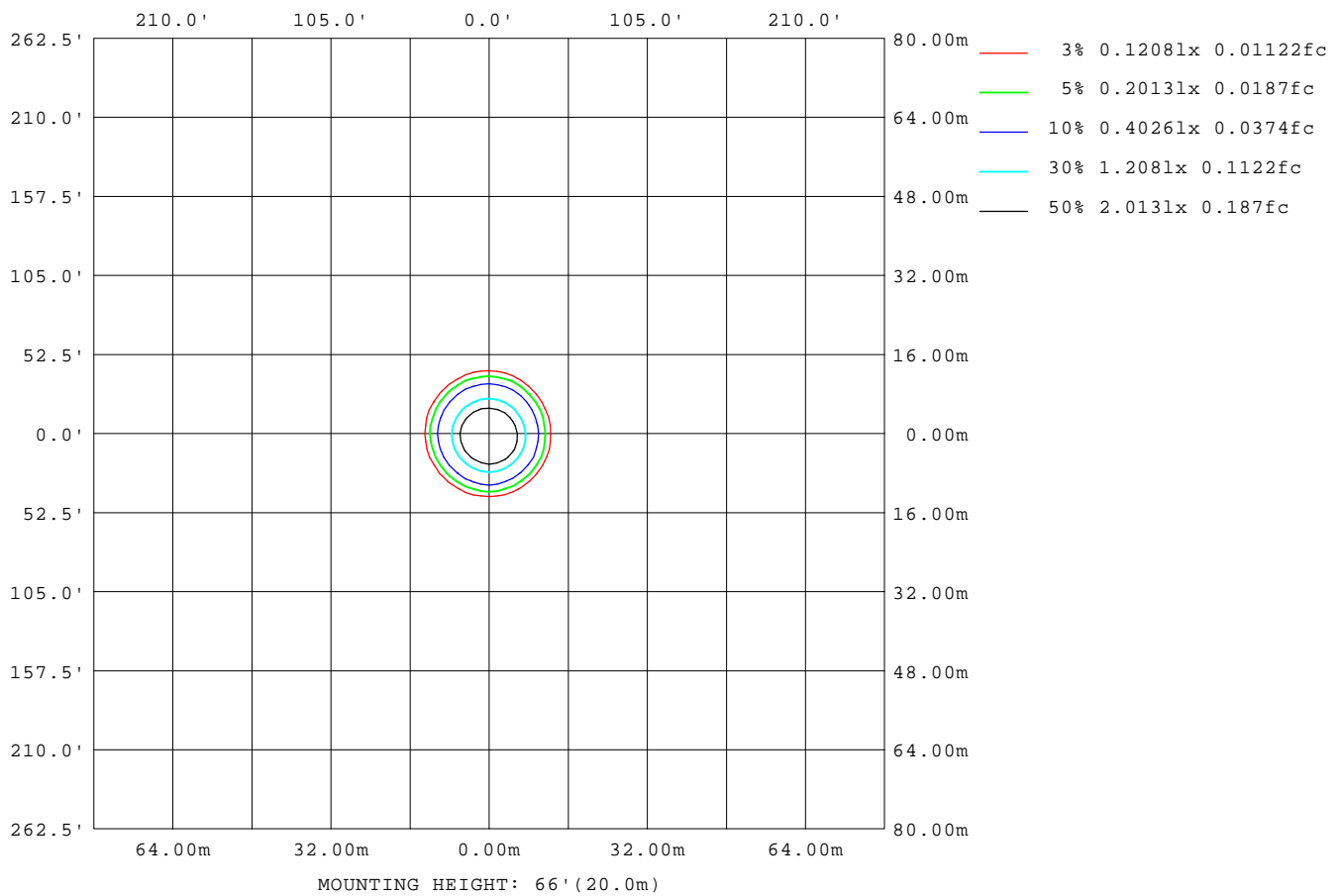
Note: The Curves indicate the illuminated area and the average illumination when the luminaire is at different distance.

C Range: 0 - 360DEG  
C Interval: 30.0DEG  
Test Speed: HIGH  
Temperature: 25.3°C  
Operators: zoe  
Test Date: 2024-12-18

γ Range: 0 - 180DEG  
γ Interval: 1.0DEG  
Test System: EVERFINE GO-SPEX500\_V1 SYSTEM V2.00.461  
Humidity: 65.0%  
Test Distance: 3.160m [K=1.0000]  
Remarks: LAMP: BXRH-30G60T0-C-83 Ra: 90  
LENS: PM-1117B 36R  
NOT DRIVER: DC 48V  
30minutes warm-up

## ISOLUX DIAGRAM

Test:U:47.997V I:0.1344A P:6.4508W PF:1.0000 Freq:49.99Hz Lamp Flux:712.09x1 lm		
NAME: OZ48-CT-28	TYPE:	WEIGHT:
SPEC.: 3000K	DIM.:	SERIAL No.: 2412181479
MFR.: RISE	SUR.: 0.000346185m2	Shielding Angle:



C Range: 0 - 360DEG  
C Interval: 30.0DEG  
Test Speed: HIGH  
Temperature:25.3℃  
Operators:zoe  
Test Date:2024-12-18

γ Range: 0 - 180DEG  
γ Interval: 1.0DEG  
Test System:EVERFINE GO-SPEX500\_V1 SYSTEM V2.00.461  
Humidity:65.0%  
Test Distance:3.160m [K=1.0000]  
Remarks: LAMP:BXRH-30G60T0-C-83 Ra:90  
LENS:PM-1117B 36R  
NOT DRIVER:DC 48V  
30minutes warm-up

### LED Avg.L Report

Test:U:47.997V I:0.1344A P:6.4508W PF:1.0000 Freq:49.99Hz Lamp Flux:712.09x1 lm		
NAME: OZ48-CT-28	TYPE:	WEIGHT:
SPEC.: 3000K	DIM.:	SERIAL No.: 2412181479
MFR.: RISE	SUR.: 0.000346185m2	Shielding Angle:

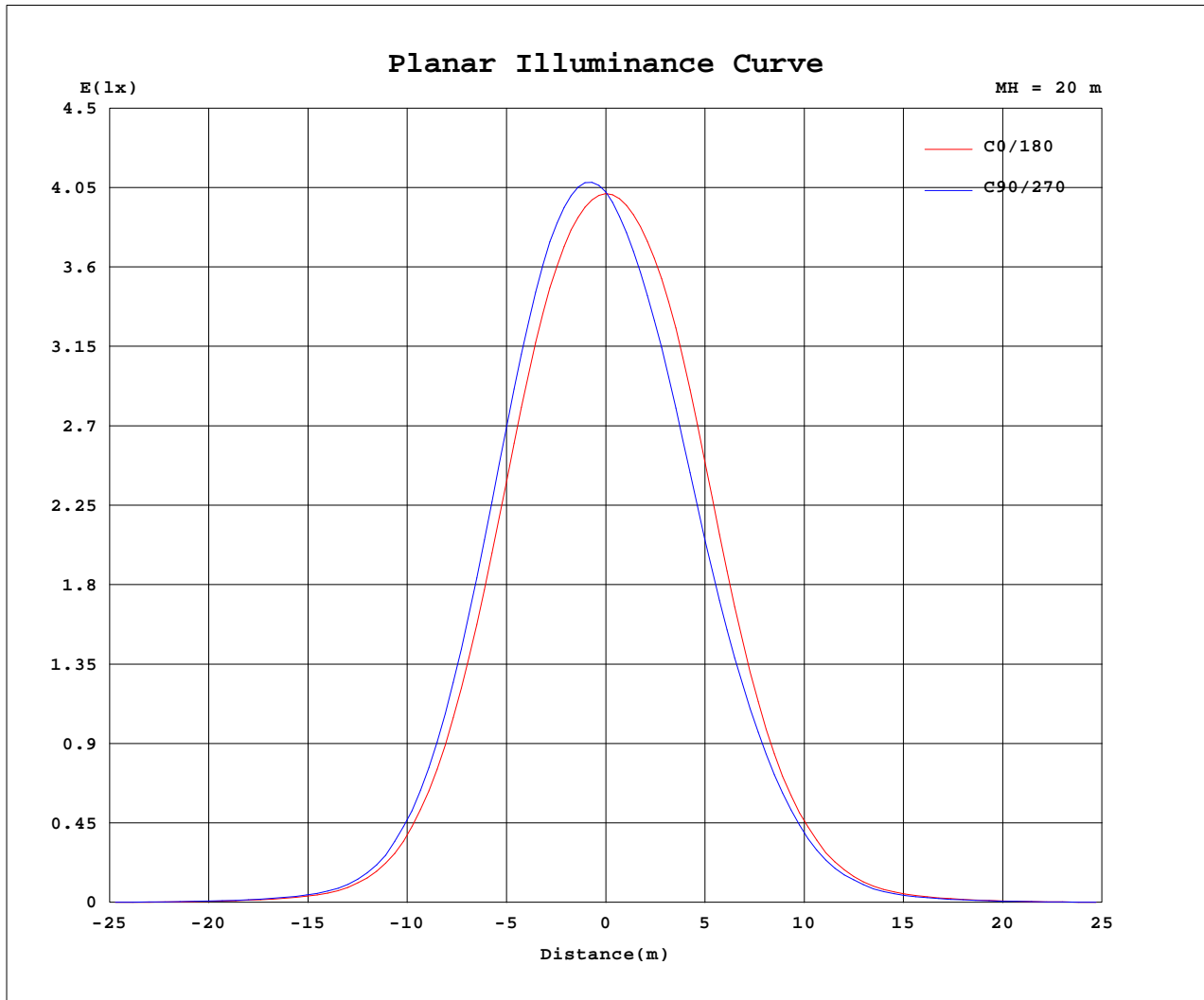
AvgL	cd/m2
L_0~180(65)av	1037
L_0~180(75)av	391
L_0~180(85)av	521
L_90~270(65)av	1026
L_90~270(75)av	371
L_90~270(85)av	514
L_45(65)av	1019
L_45(75)av	338
L_45(85)av	300

Standard: GB/T 29293-2012

C Range: 0 - 360DEG  
C Interval: 30.0DEG  
Test Speed: HIGH  
Temperature:25.3℃  
Operators:zoe  
Test Date:2024-12-18

γ Range: 0 - 180DEG  
γ Interval: 1.0DEG  
Test System:EVERFINE GO-SPEX500\_V1 SYSTEM V2.00.461  
Humidity:65.0%  
Test Distance:3.160m [K=1.0000]  
Remarks: LAMP:BXRH-30G60T0-C-83 Ra:90  
LENS:PM-1117B 36R  
NOT DRIVER:DC 48V  
30minutes warm-up

## Planar Illuminance Curve



C Range: 0 - 360DEG  
 C Interval: 30.0DEG  
 Test Speed: HIGH  
 Temperature: 25.3 °C  
 Operators: zoe  
 Test Date: 2024-12-18

γ Range: 0 - 180DEG  
 γ Interval: 1.0DEG  
 Test System: EVERFINE GO-SPEX500\_V1 SYSTEM V2.00.461  
 Humidity: 65.0%  
 Test Distance: 3.160m [K=1.0000]  
 Remarks: LAMP: BXRH-30G60T0-C-83 Ra: 90  
 LENS: PM-1117B 36R  
 NOT DRIVER: DC 48V  
 30minutes warm-up



## LUMINOUS DISTRIBUTION INTENSITY DATA

Test:U:47.997V I:0.1344A P:6.4508W PF:1.0000 Freq:49.99Hz Lamp Flux:712.09x1 lm		
NAME: OZ48-CT-28	TYPE:	WEIGHT:
SPEC.: 3000K	DIM.:	SERIAL No.: 2412181479
MFR.: RISE	SUR.: 0.000346185m2	Shielding Angle:

Table--1

UNIT: cd

C(DEG) γ (DEG)	0	30	60	90	120	150	180	210	240	270	300	330						
0	1611	1611	1611	1611	1611	1611	1611	1611	1611	1611	1611	1611						
5	1546	1593	1614	1621	1603	1585	1553	1507	1469	1445	1460	1496						
10	1332	1419	1447	1449	1411	1397	1366	1290	1222	1174	1190	1245						
15	972	1067	1100	1104	1064	1050	1021	944	880	836	851	891						
20	587	647	673	693	667	650	631	588	552	530	536	546						
25	284	309	321	342	331	326	327	313	296	283	280	272						
30	109	119	123	132	129	135	142	137	127	120	116	107						
35	40.0	44.6	45.1	47.7	47.9	51.0	54.8	52.0	48.1	45.6	43.7	39.5						
40	18.3	20.6	20.8	22.0	21.8	22.9	24.1	22.6	21.7	20.2	20.1	18.1						
45	8.57	9.02	9.53	9.89	10.0	10.8	11.2	10.6	10.2	9.54	9.21	8.62						
50	3.95	4.13	4.33	4.37	4.40	4.81	4.88	4.78	4.76	4.44	4.24	3.99						
55	1.94	2.10	2.25	2.28	2.19	2.41	2.53	2.49	2.50	2.29	2.12	1.96						
60	0.57	0.62	0.67	0.72	0.71	0.79	0.86	0.81	0.81	0.69	0.62	0.57						
65	0.14	0.14	0.14	0.14	0.15	0.15	0.16	0.17	0.17	0.16	0.15	0.14						
70	0.07	0.06	0.06	0.07	0.07	0.07	0.08	0.08	0.08	0.08	0.07	0.07						
75	0.03	0.03	0.03	0.03	0.03	0.03	0.04	0.04	0.04	0.04	0.03	0.03						
80	0.02	0.01	0.01	0.02	0.01	0.01	0.02	0.02	0.02	0.02	0.01	0.01						
85	0.02	0.01	0.01	0.01	0.01	0.01	0.01	0.01	0.01	0.02	0.01	0.01						
90	0.00	0.00	0.00	0.00	0.00	0.00	0.00	0.00	0.00	0.00	0.00	0.00						
95	0.00	0.00	0.00	0.00	0.00	0.00	0.00	0.00	0.00	0.00	0.00	0.00						
100	0.00	0.00	0.00	0.00	0.00	0.00	0.00	0.00	0.00	0.00	0.00	0.00						
105	0.00	0.00	0.00	0.00	0.00	0.00	0.00	0.00	0.00	0.00	0.00	0.00						
110	0.00	0.00	0.00	0.00	0.00	0.00	0.00	0.00	0.00	0.00	0.00	0.00						
115	0.00	0.00	0.00	0.00	0.00	0.00	0.00	0.00	0.00	0.00	0.00	0.00						
120	0.00	0.00	0.00	0.00	0.00	0.00	0.00	0.00	0.00	0.00	0.00	0.00						
125	0.00	0.00	0.00	0.00	0.00	0.00	0.00	0.00	0.00	0.00	0.00	0.00						
130	0.00	0.00	0.00	0.00	0.00	0.00	0.00	0.00	0.00	0.00	0.00	0.00						
135	0.00	0.00	0.00	0.00	0.00	0.00	0.00	0.00	0.00	0.00	0.00	0.00						
140	0.00	0.00	0.00	0.00	0.00	0.00	0.00	0.00	0.00	0.00	0.00	0.00						
145	0.00	0.00	0.00	0.00	0.00	0.00	0.00	0.00	0.00	0.00	0.00	0.00						
150	0.00	0.00	0.00	0.00	0.00	0.00	0.00	0.00	0.00	0.00	0.00	0.00						
155	0.00	0.00	0.00	0.00	0.00	0.00	0.00	0.00	0.00	0.00	0.00	0.00						
160	0.00	0.00	0.00	0.00	0.00	0.00	0.00	0.00	0.00	0.00	0.00	0.00						
165	0.00	0.00	0.00	0.00	0.00	0.00	0.00	0.00	0.00	0.00	0.00	0.00						
170	0.00	0.00	0.00	0.00	0.00	0.00	0.00	0.00	0.00	0.00	0.00	0.00						
175	0.00	0.00	0.00	0.00	0.00	0.00	0.00	0.00	0.00	0.00	0.00	0.00						
180	0.00	0.00	0.00	0.00	0.00	0.00	0.00	0.00	0.00	0.00	0.00	0.00						

C Range: 0 - 360DEG  
C Interval: 30.0DEG  
Test Speed: HIGH  
Temperature:25.3℃  
Operators:zoe  
Test Date:2024-12-18

γ Range: 0 - 180DEG  
γ Interval: 1.0DEG  
Test System:EVERFINE GO-SPEX500\_V1 SYSTEM V2.00.461  
Humidity:65.0%  
Test Distance:3.160m [K=1.0000]  
Remarks: LAMP:BXRH-30G60T0-C-83 Ra:90  
LENS:PM-1117B 36R  
NOT DRIVER:DC 48V  
30minutes warm-up